



University of Essex

Online



The Essex Online undergraduate prospectus 2020-21

► online.essex.ac.uk/undergraduate



INDEX

About us

Excellence in education	6
We are Essex Online	8
We are Essex Online, are you?	10
Study online	12
Student support	14
Online perks	16
Career-focused degrees	18
Graduation	20

Our courses

Business courses	24
Law courses	34
Health courses	40
Psychology courses	46
Combined courses	52

Studying with us

Tuition fees and funding	76
Student loans	78
Scholarships and discounts	80
Entry requirements Apply now	82
Qualifications jargon buster	84



ABOUT US



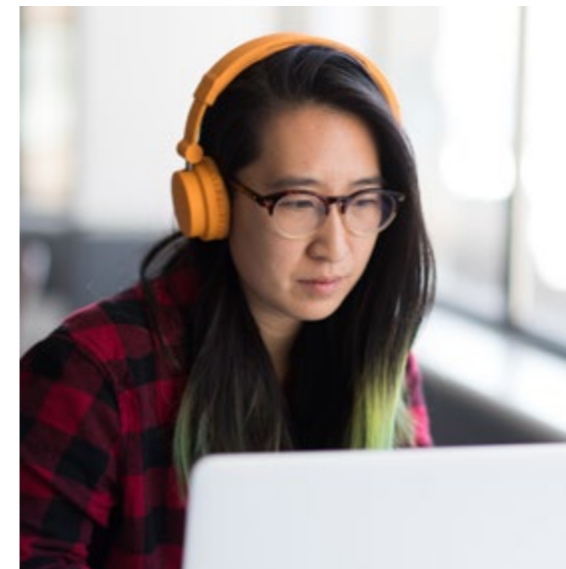
RATED GOLD

in the UK Government's
Teaching Excellence
Framework (TEF) 2018



TOP STUDENT SATISFACTION OF 89%

for an exclusively online
provider in the National
Student Survey
(NSS 2020)



Our awarding body, the
University of Essex
**UNIVERSITY
OF THE YEAR**
(Times Higher Education
Awards 2018)





WE ARE ESSEX ONLINE

Kaplan Open Learning delivers online programmes for the University of Essex. We have been working in partnership with the University since 2007 to offer high-quality undergraduate and postgraduate programmes.

We are the only exclusively online provider to have received a gold award, the highest rating in the government's Teaching Excellence and Student Outcomes Framework (TEF) 2018. We pride ourselves on our student satisfaction rating of 89% (NSS 2020) – the highest for online-only providers.

Our awarding body, the University of Essex, was named University of the Year 2018 by the Times Higher Education Awards. Essex is part of the elite group of 'dual intensive' universities for teaching and research excellence and is rated 29th in The Times and The Sunday Times Good University Guide 2019.



WINNER
UNIVERSITY
OF THE YEAR

THE AWARDS
2018

WE ARE ESSEX ONLINE, ARE YOU?

Ambitious

Our students won't be spoon-fed a degree; they will earn it through an intellectual, cultural and social journey that demands hard work and commitment.

Independent thinkers

Exploring beyond conventional wisdom, our students collaborate and generously share their ideas to inspire others.

Ambitious and unafraid

Our students challenge 'why' and have the courage and energy to shape the world around them.

Multi-taskers

Many of our students have active family lives or demanding work commitments, but they still put 100% into their study.

Inquisitive

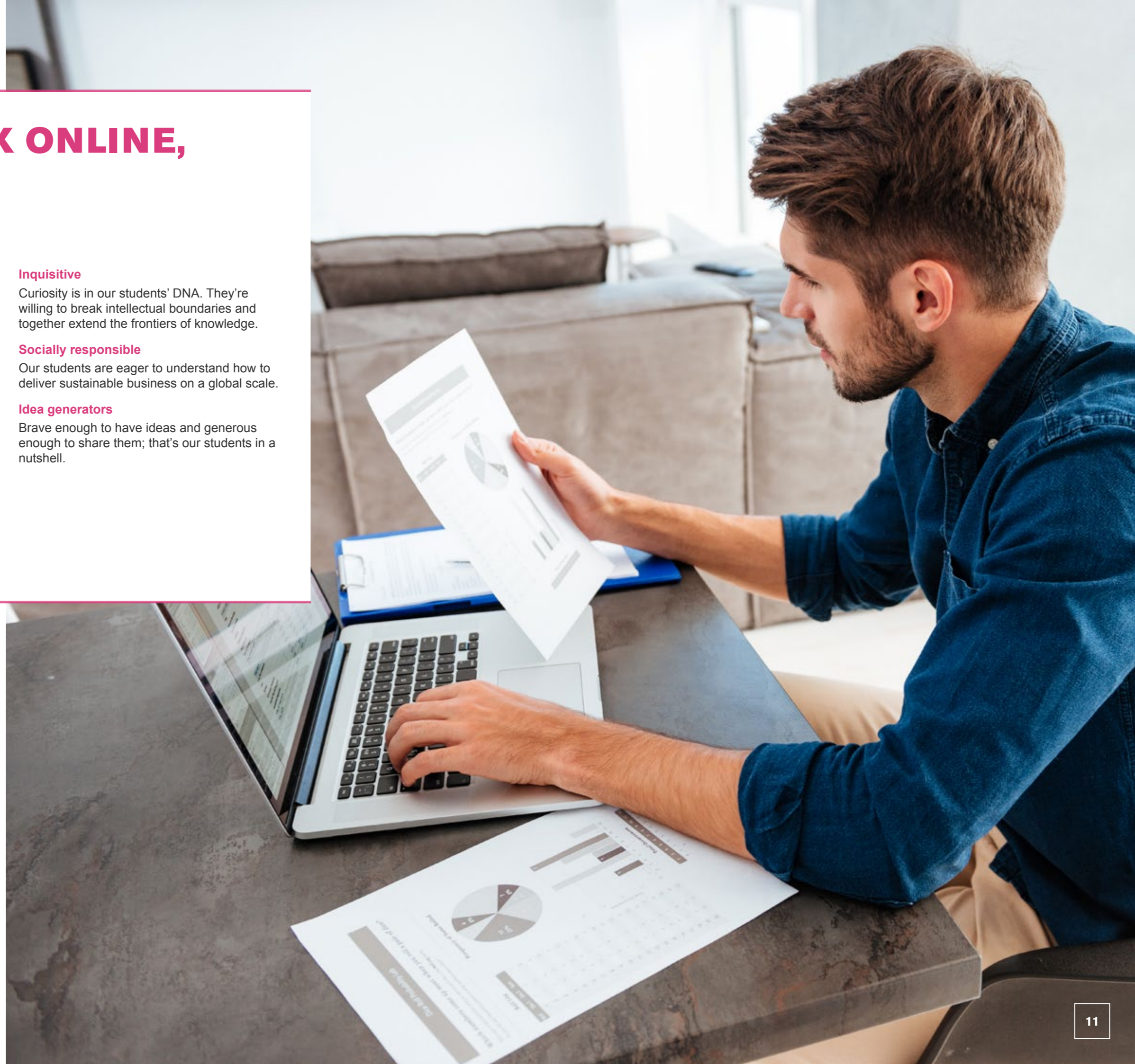
Curiosity is in our students' DNA. They're willing to break intellectual boundaries and together extend the frontiers of knowledge.

Socially responsible

Our students are eager to understand how to deliver sustainable business on a global scale.

Idea generators

Brave enough to have ideas and generous enough to share them; that's our students in a nutshell.





STUDY ONLINE

Interactive virtual learning platform

Designed specifically for online learning, our courses are delivered exclusively through our Virtual Learning Environment (VLE). This means that wherever you are, at whatever the time, you can login and get some studying done.

Rather than lengthy pre-recorded lectures and trips to examination centres, our cutting-edge course content is designed with the modern student in mind.

Lecturecasts

Course content is delivered via lecturecasts, offering you a contemporary and accessible way to interact with multimedia content and check your understanding via engaging and interactive activities.

Discussion forums

Throughout your study, you'll get to know your course matter, share your experiences and learn from fellow students through regular participation in discussion forums.

Live seminars and Q&A sessions

Our tutors host weekly live sessions throughout your modules giving you an opportunity to ask questions and discuss course materials in greater depth.

Online resources

You will get access to all core textbooks completely free of charge. In addition to the Essex eLibrary which hosts a range of academic texts and journals allowing you to read around your subject and improve your understanding.

Assessment

You'll be assessed in a variety of different ways throughout your studies, enabling you to demonstrate your diverse skillset and subject understanding. Many of our courses are assessed exclusively through written assignments and even if exams are involved these can be completed from the comfort of your home.

“The platform is easy to understand, and the guidance is second to none.”

– Adam Newman, UK, LLB (Hons)
Law with Business

STUDENT SUPPORT

Although you'll be studying independently, you won't be alone. There are a range of student services available including academic, pastoral and technical support. You will also have plenty of opportunities to collaborate, discuss and debate with your fellow classmates and tutors.

Admissions Advisers

As soon as you enquire about or apply for one of our courses, you'll be assigned an Admissions Adviser. They will steer you through the entire application process, answering any questions and assisting you with the practicalities.

Student Advisers

Once you've been accepted onto a course you will be introduced to our Student Support Team and a Student Adviser will welcome you on your first day. Our Student Advisers will be with you for your entire study journey and will be on hand to mentor and guide you throughout your course.

Academic support

Our friendly and knowledgeable tutors will be on hand for any academic queries and guidance. As well as regular virtual office hours and frequent live Q&As, they'll be marking your work and providing thorough feedback along the way.

Disability support

If there's anything our staff can do to make our courses more accessible for you, just ask! We recommend that you let us know about any physical or learning disabilities during the application process. This is so we can assess your needs and make any necessary arrangements to meet your study requirements.



"My Student Adviser made herself available every time I had a question or needed help with challenging situations. She promised to call me as soon as my degree mark became available and she did. I loved the personal touch of receiving a phone call to let me know."

– Mauro Orru, UK, LLB (Hons) Law



ONLINE PERKS

Flexible study approach

Whether you have a full-time job, a busy family life, or an action-packed travel schedule, our online and part-time courses utilise the latest technology to help you fit studying around your busy lifestyle.

Affordable education

Student loans are available to eligible students based in England. For those self-funding their studies, we offer flexible monthly payment plans, plus a range of discounts and scholarships.

Quick feedback turnaround

Throughout the course we'll provide feedback on submitted assignments within 7 days, so you'll always have an up-to-date perspective on how you're doing.

Small class sizes

To make sure you get the best possible level of support from our academic staff, we cap class sizes at 20.

Free trial period

If for some reason you don't love online study or your course after 21 days, you can receive a full refund ([terms and conditions apply](#)).

Graduate on campus

Graduates from around the world are invited to travel to campus to attend their graduation ceremony and receive their University of Essex degree certificate.

“The University of Essex Online law programme fits perfectly with my lifestyle, as it provides the flexibility that I need to pursue my studies vigorously and to keep up with my ever-changing environment.”

– Breshna Francis, Qatar, LLB (Hons) Law

CAREER-FOCUSED COURSES

Enhance your career prospects while working full-time

Our degrees and short courses are designed with working professionals in mind: not only are they flexible enough to fit around your existing commitments, but right from the start you can apply your new expertise to your day job.

Gain subject-specific knowledge

Whatever your field, our specialist degrees will allow you to gain an insight into the subject at hand. Our tutors have extensive work experience and research practice in the field they teach, meaning your knowledge is not only up-to-date but honed by years of on-the-job experience and academic expertise.

Many of our courses feature optional modules that allow you to tailor your learning to your specific interests and career objectives.

Develop transferable skills

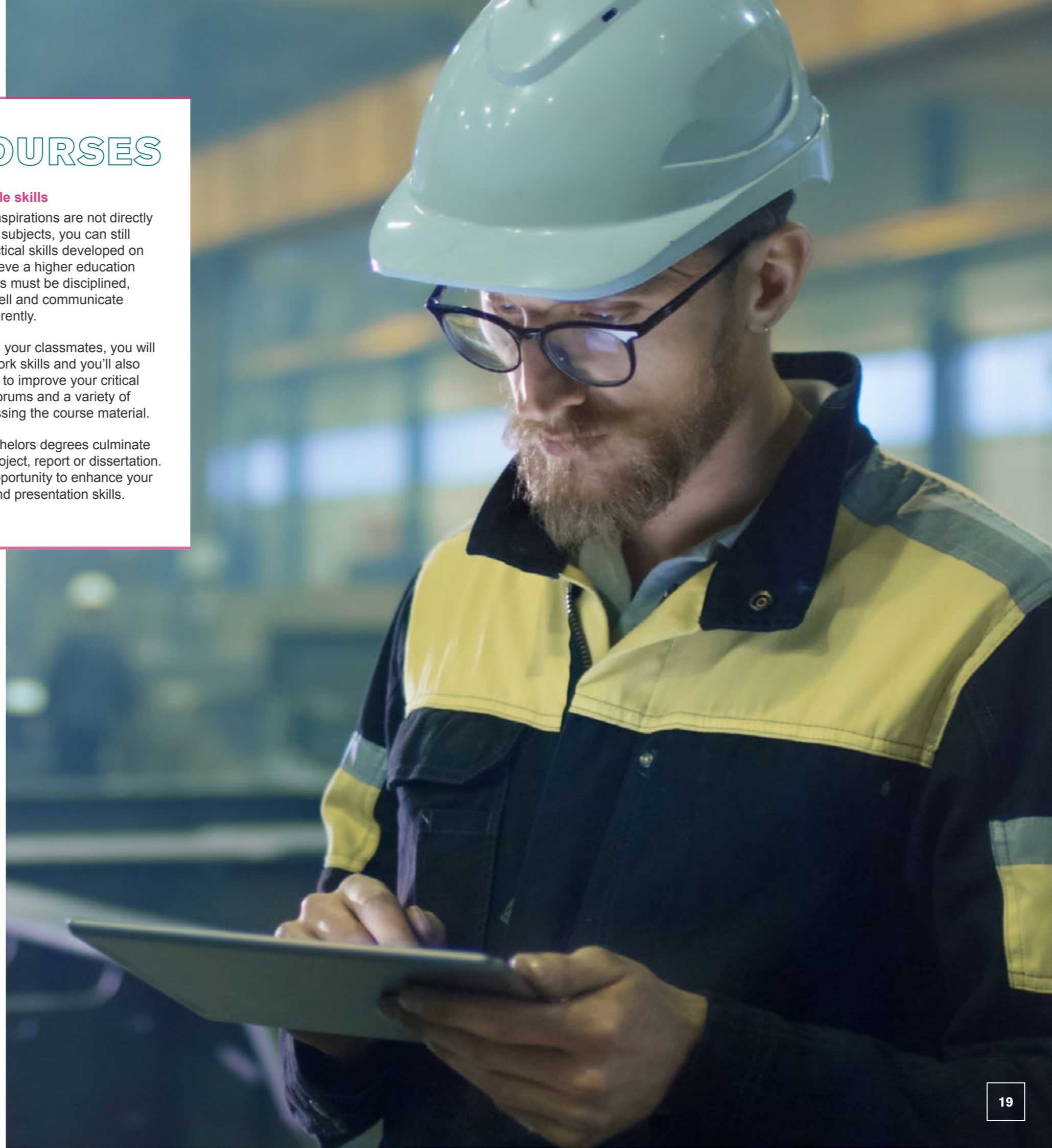
Even if your career aspirations are not directly related to one of our subjects, you can still benefit from the practical skills developed on your course. To achieve a higher education qualification, students must be disciplined, manage their time well and communicate articulately and coherently.

By collaborating with your classmates, you will develop your teamwork skills and you'll also have the opportunity to improve your critical evaluation through forums and a variety of assessments, discussing the course material.

Finally, all of our Bachelors degrees culminate in an independent project, report or dissertation. This is the perfect opportunity to enhance your research, analysis and presentation skills.

“As a result of my hard work, I am now the director of my own company. As my own boss I find the experience even more rewarding knowing that my efforts have paid off.”

– Tawa Bishi, UK, BA (Hons) Business and Management





GRADUATION

Upon successful completion of your course, you will be invited to attend a graduation ceremony at the University of Essex Colchester Campus.

Celebrate your achievement

Completing your Bachelors degree is a very special milestone in your life. Graduation is an opportunity to celebrate your hard work and dedication while also recognising and acknowledging the support received from family, friends and classmates.

Meet your tutors and Student Adviser

For our graduates, this is likely to be the first time they meet in person the staff members who have been integral to their study.

Explore Essex's campus

The beautiful University of Essex Colchester Campus is home to 16 academic departments and schools and more than 13,000 students. Graduation takes place in July, and we're usually very lucky with the weather!

Receive your certificate

You will receive the same certificate as students who studied on campus – the mode of study is only mentioned on your transcript with your final grades.

“I’m really basking in the glory that is accomplishing my goal.”

– Chantel Burrell-Harris, UK, BA (Hons)
Business and Management



OUR COURSES



OUR BUSINESS COURSES

Course	Indicative duration
BA (Hons) Business and Management	4 years
BA (Hons) Business and Management (Top-up)	16 months
CertHE Business and Management	16 months
BA (Hons) Business and Marketing	4 years

Why we're great

- As one of the longest-running providers of online business degrees, we put over a decade of experience to good use in designing our courses.
- Our certificates are awarded by Essex Business School, part of the University of Essex, a world-renowned business school ranked in the UK's top 25 for research quality (The Times and The Sunday Times Good University Guide 2019).
- Our business courses are designed with online delivery in mind – not only can you complete them around existing work commitments, you can also use course material in your job from day one.

COMBINED COURSES

Course	Indicative duration
BSc (Hons) Business Psychology	4 years
CertHE Business Psychology	16 months
LLB (Hons) Law with Business	4 years
CertHE Law with Business	16 months

Check our [combined courses section](#) for more information.

Business is an ever-changing field and one of the most versatile subjects to study. Graduates have a wide variety of career options and the ability to work in any industry.

Our courses are designed by experts to provide you with key professional and technical knowledge across a range of business disciplines. In addition, our teaching style enables you to develop important practical skills such as communication, decision-making and problem-solving.

You can choose to specialise in either management or marketing, or keep your options open by starting on our shorter CertHE course which allows progression onto either of the full Bachelors degrees.

“The exchange of ideas especially in an online setting can really bring new perspectives and ways of thinking. At the moment I’m trying to put my learning into use in my current role in human resources.”

– Anna Kryszak, UK, BA (Hons) Business and Management

BA (Hons) BUSINESS AND MANAGEMENT

Examine real-world companies and develop your managerial toolkit with this practical and comprehensive business degree. You will improve your project management, leadership and financial knowledge while sharing ideas with fellow students from around the world.

Start dates: August, September, October and November 2020, January, February, March, April, June and July 2021

Tuition fee 2020-21: £18,500 ([learn more](#))

Mode of study: Online and part-time

Qualification: BA (Hons)

Funding options: [See here](#) for more information

Indicative duration: 4 years

University of Essex Online programmes are delivered by Kaplan Open Learning, an experienced online learning provider.

Syllabus

The Bachelors degree in Business and Management is made up of the following modules and, upon completion, is equal to a total of 360 credits.

Level 4 modules

- Fundamentals of Effective Learning (15 credits)*
- Business and Management Skills (15 credits)*
- Fundamentals of Marketing (15 credits)*
- Human Resource Management (15 credits)*
- Introduction to Finance (15 credits)*
- Business Environment (15 credits)*
- Core Skills and Employability (30 credits)*

* These modules are core and must be passed in order to achieve the award.

Level 5 modules

- Business Planning (15 credits)*
- Marketing and Sales Management (15 credits)*
- Operations Management (15 credits)*
- Leadership and Managing Teams (15 credits)*
- Financial Decision Making (15 credits)*
- Project Management (15 credits)*
- Business Investigation (30 credits)*

Level 6 modules

- Global Business Environment (15 credits)
- Business Strategy (15 credits)*
- Strategic Human Resource Management (15 credits)
- Business Law (15 credits)
- International Marketing Strategy (15 credits)
- Business Finance (15 credits)
- Advanced Business Project (30 credits)*

Entry requirements

In order to satisfy the academic entry route requirements for our BA (Hons) Business and Management, you must have the following qualifications as a minimum:

- two A-levels or equivalent

In order to satisfy the work experience entry route requirements for our BA (Hons) Business and Management, you must meet the following criteria:

- GCSE Maths and English at grade C or above, or equivalent
- three years' relevant work experience

If English is not your first language, your English ability should be equivalent to an IELTS score of 6.0. If you do not hold an IELTS or equivalent qualification, we require students to pass a free online English test.

READY TO APPLY?

Complete the online application form and an Admissions Adviser will be in touch to assist you in the enrolment process.

APPLY NOW



BA (Hons) BUSINESS AND MANAGEMENT (Top-up)

Ideal for those who hold a Foundation degree or equivalent in a business-related field, this course not only allows you to complete your Bachelors, it also explores the latest updates and innovations in the business world.

Start dates: August and October 2020, January, March and May 2021

Tuition fee 2020-21: £6,167 ([learn more](#))

Mode of study: Online and part-time

Funding options: [See here](#) for more information

Qualification: BA (Hons)

Indicative duration: 16 months

University of Essex Online programmes are delivered by Kaplan Open Learning, an experienced online learning provider.

Syllabus

The Bachelors degree in Business and Management (Top-up) is made up of the following modules and, upon completion, is equal to a total of 120 credits.

Level 6 modules

- Global Business Environment (15 credits)
- Business Strategy (15 credits)*
- Strategic Human Resource Management (15 credits)
- Business Law (15 credits)
- International Marketing Strategy (15 credits)
- Business Finance (15 credits)
- Advanced Business Project (30 credits)*

* These modules are core and must be passed in order to achieve the award.

Entry requirements

Our top-up courses are designed for those with some prior university level education. As such, you must have completed one of the following within the last five years:

- a relevant Foundation degree from University of Essex Online or another recognised institution
- two years of a relevant BA (Hons) degree from a recognised institution
- a relevant Higher National Diploma (HND) from a recognised institution

You will also need to meet our English language requirements. Additionally, you will need to pass your first assignment set within the first three weeks of the course in order to continue with your studies.

READY TO APPLY?

Complete the online application form and an Admissions Adviser will be in touch to assist you in the enrolment process.

APPLY NOW



CerTHE BUSINESS AND MANAGEMENT

This short course will give you a solid grounding in essential business tools and techniques in areas such as marketing, HR and finance. Whether you hope to progress onto a full degree or to use this short course to kickstart your career in business, the range of skills and knowledge you will develop, which are beneficial in almost any field.

Start dates: August, September, October and November 2020, January, February, March, April, June and July 2021

Tuition fee 2020-21: £6,167 ([learn more](#))

Mode of study: Online and part-time

Qualification: CertHE

Funding options: [See here](#) for more information

Indicative duration: 16 months

University of Essex Online programmes are delivered by Kaplan Open Learning, an experienced online learning provider.

Syllabus

The CertHE Business and Management is made up of the following modules and, upon completion, is equal to a total of 120 credits.

Level 4 modules

- Fundamentals of Effective Learning (15 credits)*
- Business and Management Skills (15 credits)*
- Fundamentals of Marketing (15 credits)*
- Human Resource Management (15 credits)*
- Business Environment (15 credits)*
- Introduction to Finance (15 credits)*
- Core Skills and Employability (30 credits)*

* These modules are core and must be passed in order to achieve the award.

Upon completion of your CertHE Business and Management we offer the opportunity for you to progress to study for a Bachelors degree (360 credits).

Entry requirements

We believe that education should be accessible for everyone. That's why we offer an open entry route – meaning you don't need any prior academic or work experience in order to start studying with us.

If English is not your first language, your English ability should be equivalent to an IELTS score of 6.0. If you do not hold an IELTS or equivalent qualification, we require students to pass a free online English test.

You will need to pass your first assignment set within the first three weeks of the course in order to continue with your studies.

READY TO APPLY?

Complete the online application form and an Admissions Adviser will be in touch to assist you in the enrolment process.

APPLY NOW

BA (Hons) BUSINESS AND MARKETING

Improve your ability to think creatively and apply data learnings to your marketing activities with our wide-ranging business and marketing degree. You will discuss key marketing trends with your peers while improving your business know-how as a whole.

Start dates: August, September, October and November 2020, January, February, March, April, June and July 2021

Tuition fee 2020-21: £18,500 ([learn more](#))

Mode of study: Online and part-time

Qualification: BA (Hons)

Funding options: [See here](#) for more information

Indicative duration: 4 years

University of Essex Online programmes are delivered by Kaplan Open Learning, an experienced online learning provider.

Syllabus

The BA (Hons) Business and Marketing degree is made up of the following modules and, upon completion, is equal to a total of 360 credits.

Level 4 modules

- Fundamentals of Effective Learning (15 credits)*
- Business and Management Skills (15 credits)*
- Fundamentals of Marketing (15 credits)*
- Human Resource Management (15 credits)*
- Introduction to Finance (15 credits)*
- Business Environment (15 credits)*
- Core Skills and Employability (30 credits)*

* These modules are core and must be passed in order to achieve the award.

Level 5 modules

- Business Planning (15 credits)*
- Marketing and Sales Management (15 credits)*
- Operations Management (15 credits)*
- Consumer Behaviour (15 credits)*
- Marketing Communications (15 credits)*
- Project Management (15 credits)*
- Business Investigation (30 credits)*

Level 6 modules

- Global Business Environment (15 credits)*
- Business Strategy (15 credits)*
- e-Business and Marketing (15 credits)
- Marketing Research (15 credits)*
- International Marketing Strategy (15 credits)*
- Services Marketing (15 credits)
- Advanced Business Project (30 credits)*

Entry requirements

In order to satisfy the academic entry route requirements for our BA (Hons) Business and Marketing, you must have the following qualifications as a minimum:

- two A-levels or equivalent

In order to satisfy the work experience entry route requirements for our BA (Hons) Business and Marketing, you must meet the following criteria:

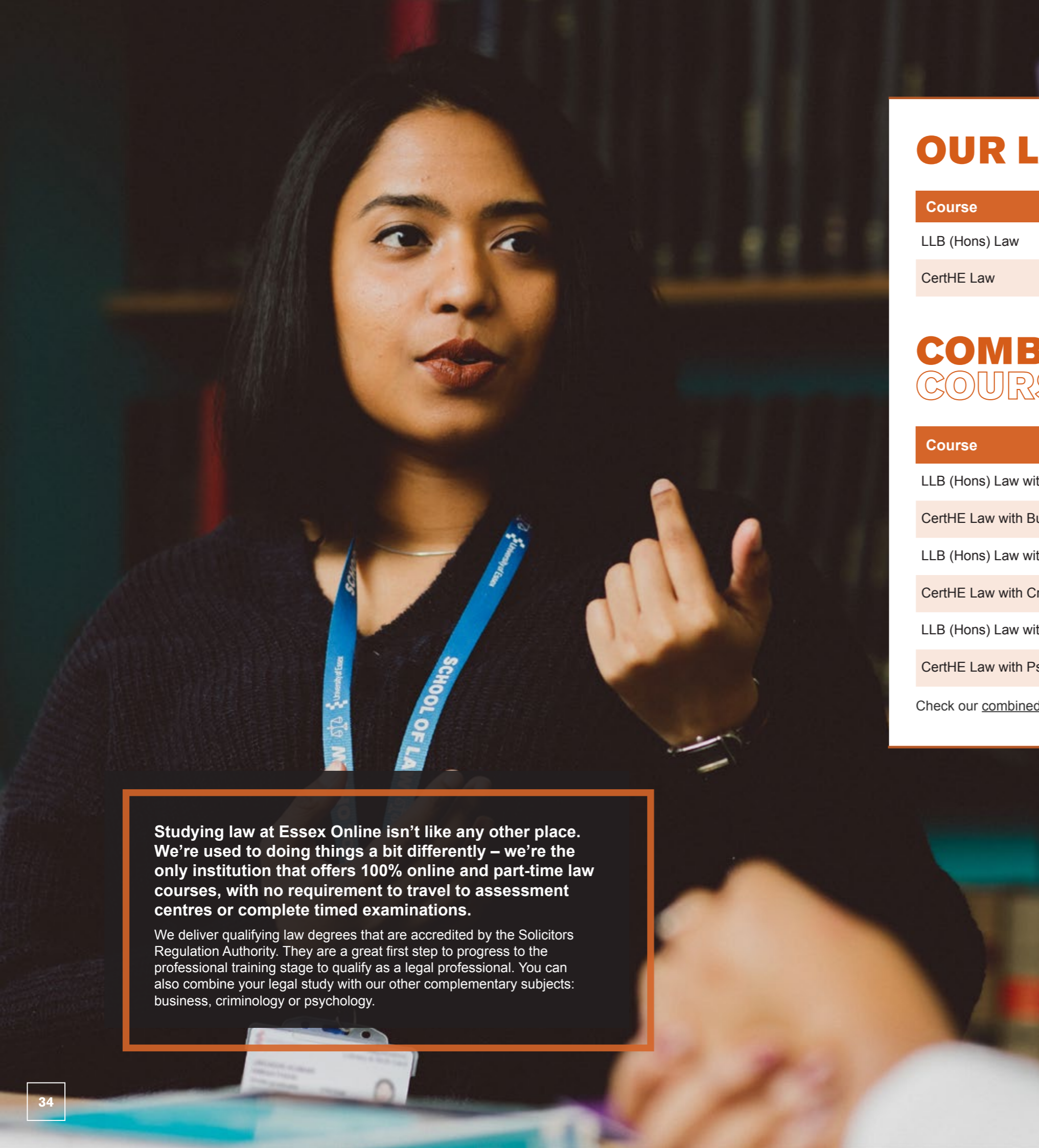
- GCSE Maths and English at grade C or above, or equivalent
- three years' relevant work experience

If English is not your first language, your English ability should be equivalent to an IELTS score of 6.0. If you do not hold an IELTS or equivalent qualification, we require students to pass a free online English test.

READY TO APPLY?

Complete the online application form and an Admissions Adviser will be in touch to assist you in the enrolment process.

APPLY NOW



OUR LAW COURSES

Course	Indicative duration
LLB (Hons) Law	4 years
CertHE Law	16 months

Why we're great

- We are employability focused, equipping you with skills required for careers in the legal sector, and transferable skills which are highly valued by employers in other sectors.
- Our modules are delivered by experienced academics and legal practitioners who will help you to develop the legal knowledge and skills required for legal practice.
- We have a variety of assessment methods, including written assignments, discussion forums, reflective journal entries and exams. If you don't suit exams you won't have to do them and can choose an alternative assessment method.

COMBINED COURSES

Course	Indicative duration
LLB (Hons) Law with Business	4 years
CertHE Law with Business	16 months
LLB (Hons) Law with Criminology	4 years
CertHE Law with Criminology	16 months
LLB (Hons) Law with Psychology	4 years
CertHE Law with Psychology	16 months

Check our [combined courses section](#) for more information.

“I think the course was sufficiently challenging which is what you expect from this kind of course. The most enjoyable part was learning about different areas of law in different countries with my fellow students.”

– Shaun Barbour, USA, LLB (Hons) Law

Studying law at Essex Online isn't like any other place. We're used to doing things a bit differently – we're the only institution that offers 100% online and part-time law courses, with no requirement to travel to assessment centres or complete timed examinations.

We deliver qualifying law degrees that are accredited by the Solicitors Regulation Authority. They are a great first step to progress to the professional training stage to qualify as a legal professional. You can also combine your legal study with our other complementary subjects: business, criminology or psychology.

LLB (Hons) LAW

This academically rigorous degree[◊] is Solicitors Qualifying Examination (SQE) focused. You will study the seven foundations of legal knowledge and undertake skills-focused modules that you will be assessed on during the SQE. On completion of your degree, you will be ready to pursue legal training and also equipped to thrive in a wide range of careers in related sectors.

Start dates: August, September, October and November 2020, January, February, March, April, June and July 2021

Tuition fee 2020-21: £18,500 ([learn more](#))

Mode of study: Online and part-time

Qualification: LLB (Hons)

Funding options: [See here](#) for more information

Indicative duration: 4 years

University of Essex Online programmes are delivered by Kaplan Open Learning, an experienced online learning provider.

Syllabus

The LLB (Hons) Law is made up of the following modules and, upon completion, is equal to a total of 360 credits.

Level 4 modules

- Legal Skills and Context (30 credits)*
- Criminal Law (30 credits)†
- Public Law (30 credits)†
- Contract Law (30 credits)†

* These modules are core and must be passed in order to achieve the award.

† These modules are compulsory and must be passed in order to achieve a Qualifying Law Degree.

§ These modules optional and SQE-focused.

Level 5 modules

- Law of Tort (30 credits)†
- Land Law (30 credits)†
- European Union Law (15 credits)†
- Optional modules equal to 45 credits:
 - Company Law (30 credits)§
 - Legal Professions and Services (15 credits)§
 - Business Law: Finance and Tax (15 credits)§
 - Introduction to Public International Law (15 credits)

Level 6 modules

- Equity and Trusts (15 credits)†
- Wills and the Administration of Estates (15 credits)†§
- Three optional modules:
 - Final Year Research Project (30 credits)
 - Criminal and Civil Litigation (30 credits)§
 - Commercial Law (30 credits)§
 - Family Law (30 credits)
 - Law of Evidence (30 credits)§
 - International Trade Law (30 credits)
 - Employment Law (30 credits)
 - Medical Law (30 credits)

Entry requirements

In order to satisfy the academic entry route requirements for our LLB (Hons) Law, you must have the following qualifications as a minimum:

- three A-levels or equivalent

In order to satisfy the work experience entry route requirements for our LLB (Hons) Law, you must meet the following criteria:

- GCSE Maths and English at grade C or above, or equivalent
- three years' relevant work experience

If English is not your first language, your English ability should be equivalent to an IELTS score of 6.0. If you do not hold an IELTS or equivalent qualification, we require students to pass a free online English test.

◊ If you enrol onto this programme by September 2021, you can choose the Legal Practice Course (LPC) route rather than the SQE route to qualify as a solicitor. This programme also meets Bar Standards Board's (BSB) academic component of training to become a barrister.

READY TO APPLY?

Complete the online application form and an Admissions Adviser will be in touch to assist you in the enrolment process.

APPLY NOW



CertHE LAW

This short course is designed to introduce you to the English legal system. You will delve into a number of essential law topics and explore their meaning through discussion forums with classmates around the world.

Start dates: August, September, October and November 2020, January, February, March, April, June and July 2021

Tuition fee 2020-21: £6,167 ([learn more](#))

Mode of study: Online and part-time

Funding options: [See here](#) for more information

Qualification: CertHE

Indicative duration: 16 months

University of Essex Online programmes are delivered by Kaplan Open Learning, an experienced online learning provider.

Syllabus

The CertHE Law is made up of the following modules and, upon completion, is equal to a total of 120 credits.

Level 4 modules

- Legal Skills and Context (30 credits)*
- Criminal Law (30 credits)
- Public Law (30 credits)
- Contract Law (30 credits)

* This module is core and must be passed in order to achieve the award.

Upon completion of your CertHE Law we offer the opportunity for you to progress to study for a Bachelors degree (360 credits).

Entry requirements

We believe that education should be accessible for everyone. That's why we offer an open entry route – meaning you don't need any prior academic or work experience in order to start studying with us.

If English is not your first language, your English ability should be equivalent to an IELTS score of 6.0. If you do not hold an IELTS or equivalent qualification, we require students to pass a free online English test.

You will need to pass your first assignment set within the first three weeks of the course in order to continue with your studies.

READY TO APPLY?

Complete the online application form and an Admissions Adviser will be in touch to assist you in the enrolment process.

APPLY NOW



OUR HEALTH COURSES

Course	Indicative duration
BSc (Hons) Healthcare Management	4 years
CertHE Healthcare Management	16 months

Why we're great

- The study materials will ensure you gain an understanding of the challenges faced by healthcare managers and equip you with the leadership skills to progress in your career.
- Our online health courses are created by subject experts, giving you in-depth knowledge and understanding of leadership and managerial approaches to team and organisational development across a variety of healthcare contexts.
- Our courses are delivered 100% online and part time, enabling you to fit your studies around personal and professional commitments and achieve a new qualification without the need for a career break.

Healthcare is a vast and complex subject area, affecting everyone across the world. The levels of both accessibility and sophistication of healthcare and healthcare organisations differ greatly from one country to another – as do the challenges that arise.

Our courses have been designed by subject experts to give you an in-depth knowledge of the many different health related challenges that arise globally. You will be actively supported to consider your approach to healthcare management and develop a range of transferable skills that are valuable in a variety of professional roles.

You can choose to study our BSc Healthcare Management, introducing you to the complementary fields of business and management. We also offer a shorter CertHE course which allows progression onto our full Bachelors degree.

“Working in the pharmaceutical industry requires a lot of travel and time away from home. Online study fits with my busy lifestyle and provides me with the flexibility to achieve my dream of getting a degree in healthcare management.”

– Tanya Van Wijk, UK, BSc (Hons)
Healthcare Management



BSc (Hons) HEALTHCARE MANAGEMENT

Take the first steps towards a career in healthcare management. Explore the fascinating fields of health and business through this unique course. You will develop a thorough understanding of the different challenges facing healthcare professionals, while perfecting the management skills needed to progress in your career.

Start dates: August and October 2020, January, March and June 2021

Tuition fee 2020-21: £18,500 ([learn more](#))

Mode of study: Online and part-time

Qualification: BSc (Hons)

Funding options: [See here](#) for more information

Indicative duration: 4 years

University of Essex Online programmes are delivered by Kaplan Open Learning, an experienced online learning provider.

Syllabus

The BSc (Hons) Healthcare Management is made up of the following modules and, upon completion, is equal to a total of 360 credits.

Level 4 modules

- Introduction to Healthcare Management (15 credits)
- Global Health (15 credits)
- Business and Management Skills (15 credits)
- Introduction to Finance (15 credits)
- Human Resource Management (15 credits)
- Health, Society and Public Policy (15 credits)
- Personal and Professional Development 1 (30 credits)

Level 5 modules

- Public Health (15 credits)
- Financial Decision Making (15 credits)
- Leadership and Managing Teams (15 credits)
- Introduction to Healthcare Informatics (15 credits)
- Project Management (15 credits)
- Introduction to Health Economics (15 credits)
- Personal and Professional Development 2 (30 credits)

Level 6 modules

- Research Methods in Healthcare (15 credits)
- Comparative Health Systems (15 credits)
- Business Strategy (15 credits)
- Health Innovation (15 credits)
- Occupational Psychology (15 credits)
- Contemporary Issues in Practice (15 credits)
- Healthcare Management Dissertation (30 credits)*

* These modules are core and must be passed in order to achieve the award.

Entry requirements

In order to satisfy the academic entry route requirements for our BSc (Hons) Healthcare Management, you must have the following qualifications as a minimum:

- three A-levels or equivalent

In order to satisfy the work experience entry route requirements for our BSc (Hons) Healthcare Management, you must meet the following criteria:

- GCSE Maths and English at grade C or above, or equivalent
- three years' relevant work experience

If English is not your first language, your English ability should be equivalent to an IELTS score of 6.0. If you do not hold an IELTS or equivalent qualification, we require students to pass a free online English test.

READY TO APPLY?

Complete the online application form and an Admissions Adviser will be in touch to assist you in the enrolment process.

APPLY NOW



CertHE HEALTHCARE MANAGEMENT

This short online course will give you an in-depth introduction to leadership and management approaches in healthcare. You will develop a number of transferable skills to benefit you in your current and future role .

Start dates: August and October 2020, January, March and June 2021

Tuition fee 2020-21: £6,167 ([learn more](#))

Mode of study: Online and part-time

Funding options: [See here](#) for more information

Qualification: CertHE

Indicative duration: 16 months

University of Essex Online programmes are delivered by Kaplan Open Learning, an experienced online learning provider.

Syllabus

The CertHE Healthcare Management is made up of the following modules and, upon completion, is equal to a total of 120 credits.

Level 4 modules

- Introduction to Healthcare Management (15 credits)
- Global Health (15 credits)
- Business and Management Skills (15 credits)
- Introduction to Finance (15 credits)
- Human Resource Management (15 credits)
- Health, Society and Public Policy (15 credits)
- Personal and Professional Development 1 (30 credits)

Upon completion of your CertHE Healthcare Management, we offer the opportunity for you to progress on to study for a full Bachelors degree (360 credits).

Entry requirements

We believe that education should be accessible for everyone. That's why we offer an open entry route – meaning you don't need any prior academic or work experience in order to start studying with us.

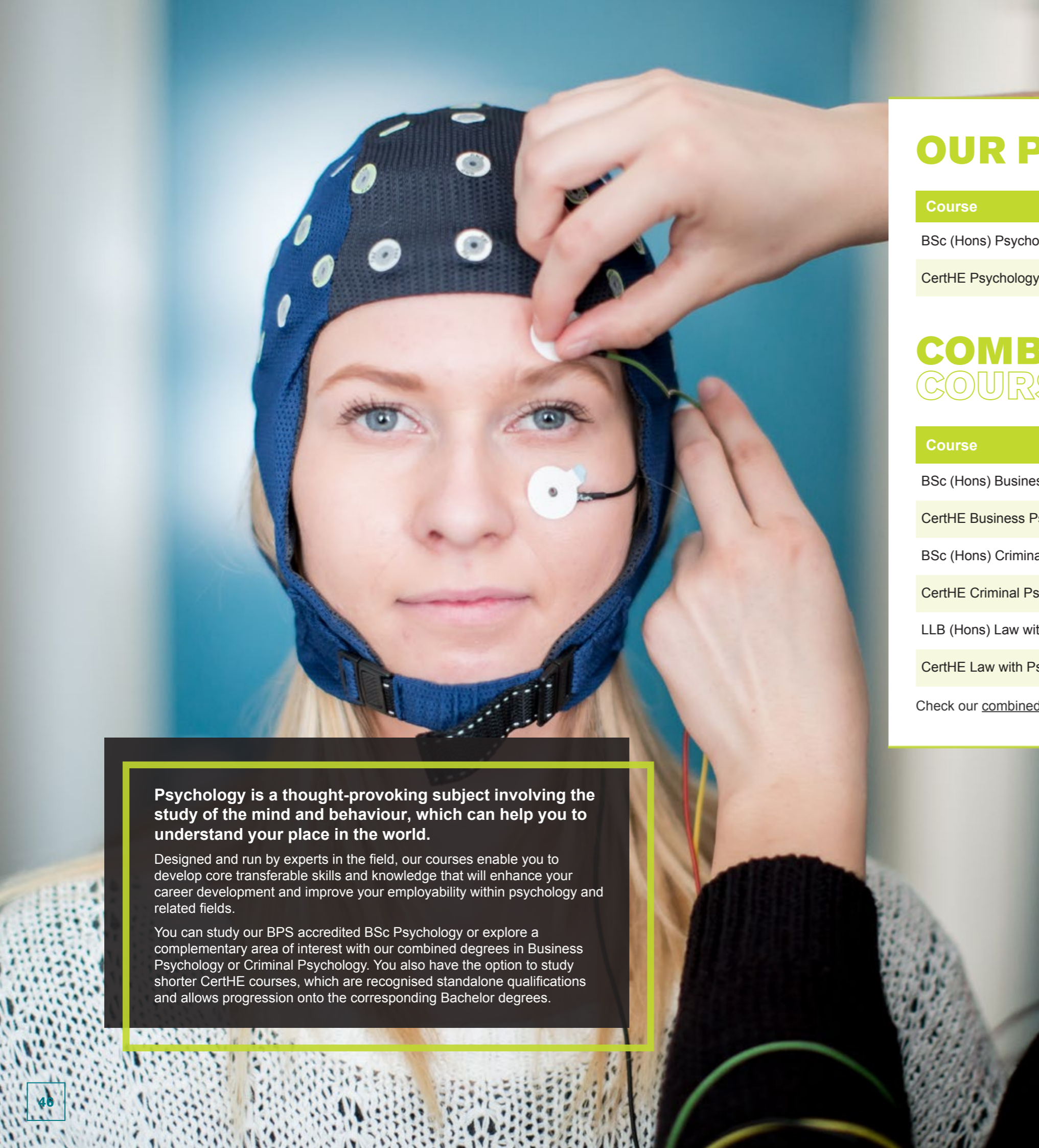
If English is not your first language, your English ability should be equivalent to an IELTS score of 6.0. If you do not hold an IELTS or equivalent qualification, we require students to pass a free online English test.

You will need to pass your first assignment set within the first three weeks of the course in order to continue with your studies.

READY TO APPLY?

Complete the online application form and an Admissions Adviser will be in touch to assist you in the enrolment process.

APPLY NOW



OUR PSYCHOLOGY COURSES

Course	Indicative duration
BSc (Hons) Psychology	4 years
CertHE Psychology	16 months

Why we're great

- Our courses are 100% assignment based with every module having engagement activities enabling you to collaborate and interact with other students and tutors. It's a great way to develop your communication skills.
- You will be supported by our dedicated, motivated and passionate tutors who are all specialists in their fields. They will guide you through each module with their expertise.
- We help you to develop your employability and transferable skills, including critical thinking, reasoning, problem solving, communication, research skills such as interviewing, understanding of ethics, numeracy and many more.

COMBINED COURSES

Course	Indicative duration
BSc (Hons) Business Psychology	4 years
CertHE Business Psychology	16 months
BSc (Hons) Criminal Psychology	4 years
CertHE Criminal Psychology	16 months
LLB (Hons) Law with Psychology	4 years
CertHE Law with Psychology	16 months

Check our [combined courses section](#) for more information.

Psychology is a thought-provoking subject involving the study of the mind and behaviour, which can help you to understand your place in the world.

Designed and run by experts in the field, our courses enable you to develop core transferable skills and knowledge that will enhance your career development and improve your employability within psychology and related fields.

You can study our BPS accredited BSc Psychology or explore a complementary area of interest with our combined degrees in Business Psychology or Criminal Psychology. You also have the option to study shorter CertHE courses, which are recognised standalone qualifications and allows progression onto the corresponding Bachelor degrees.

“I have always been fascinated by psychology. The course isn't easy and you need to be focused and make time to read the literature and complete your modules but it has ignited a passion for learning that I had forgotten I had.”

– Michelle Franklin, UK, BSc (Hons) Psychology

BSc (Hons) PSYCHOLOGY



This programme is accredited by the British Psychological Society (BPS), satisfying the Graduate Basis for Chartered Membership Curriculum. You will learn about the scientific and theoretical underpinnings of psychology, different research methods and several specialised areas.

Start dates: September and November 2020, February, April and July 2021

Tuition fee 2020-21: £18,500 ([learn more](#))

Mode of study: Online and part-time

Qualification: BSc (Hons)

Funding options: [See here](#) for more information

Indicative duration: 4 years

University of Essex Online programmes are delivered by Kaplan Open Learning, an experienced online learning provider.

Syllabus

The BSc (Hons) Psychology is made up of the following modules and, upon completion, is equal to a total of 360 credits.

Level 4 modules

- Fundamentals of Effective Learning in Psychology (15 credits)*
- Introduction to Social Psychology (15 credits)*
- Personality and Intelligence (15 credits)*
- Introduction to Cognitive Psychology (15 credits)*
- The Psychology of Attitudes (15 credits)*
- Mental Health, Stress and Well-being (15 credits)*
- Introduction to Research Methods (30 credits)*

* These modules are core and must be passed in order to achieve the award.

Level 5 modules

- Biological Psychology (15 credits)*
- Advanced Cognitive Psychology (15 credits)*
- Individual Differences, Emotions and Behaviour (15 credits)*
- Reasoning and Decision-Making (15 credits)*
- Quantitative Psychology (15 credits)*
- Psychological Development through the Lifespan (15 credits)*
- One optional module:
 - Forensic Psychology (15 credits)
 - Health Psychology (15 credits)
 - Educational Psychology (15 credits)
- Qualitative Research Methods (15 credits)*

Level 6 modules

- Critical Social Psychology (15 credits)*
- Developmental Science (15 credits)*
- Occupational Psychology (15 credits)
- Psychology of Sport and Exercise (15 credits)
- Investigative Psychology (15 credits)
- Clinical and Counselling Psychology (15 credits)
- Final Psychology Project (30 credits)*

Entry requirements

In order to satisfy the academic entry route requirements for our BSc (Hons) Psychology, you must have the following qualifications as a minimum:

- three A-levels or equivalent

In order to satisfy the work experience entry route requirements for our BSc (Hons) Psychology, you must meet the following criteria:

- GCSE Maths and English at grade C or above, or equivalent
- three years' relevant work experience

If English is not your first language, your English ability should be equivalent to an IELTS score of 6.0. If you do not hold an IELTS or equivalent qualification, we require students to pass a free online English test.

READY TO APPLY?

Complete the online application form and an Admissions Adviser will be in touch to assist you in the enrolment process.

APPLY NOW



CertHE PSYCHOLOGY

Do you want to understand what makes people tick? Through this short course you will study the science behind the mind, brain and behaviour. On completion of the course, you will have the opportunity to progress on to study the Bachelors degree.

Start dates: September and November 2020, February, April and July 2021

Tuition fee 2020-21: £6,167 ([learn more](#))

Mode of study: Online and part-time

Funding options: [See here](#) for more information

Qualification: CertHE

Indicative duration: 16 months

University of Essex Online programmes are delivered by Kaplan Open Learning, an experienced online learning provider.

Syllabus

The CertHE Psychology is made up of the following modules and, upon completion, is equal to a total of 120 credits.

Level 4 modules

- Fundamentals of Effective Learning in Psychology (15 credits)*
- Introduction to Social Psychology (15 credits)*
- Personality and Intelligence (15 credits)*
- Introduction to Cognitive Psychology (15 credits)*
- The Psychology of Attitudes (15 credits)*
- Mental Health, Stress and Wellbeing (15 credits)*
- Introduction to Research Methods (30 credits)*

Upon completion of your CertHE Psychology, we offer the opportunity for you to progress on to study for a full Bachelors degree (360 credits).

Entry requirements

We believe that education should be accessible for everyone. That's why we offer an open entry route – meaning you don't need any prior academic or work experience in order to start studying with us.

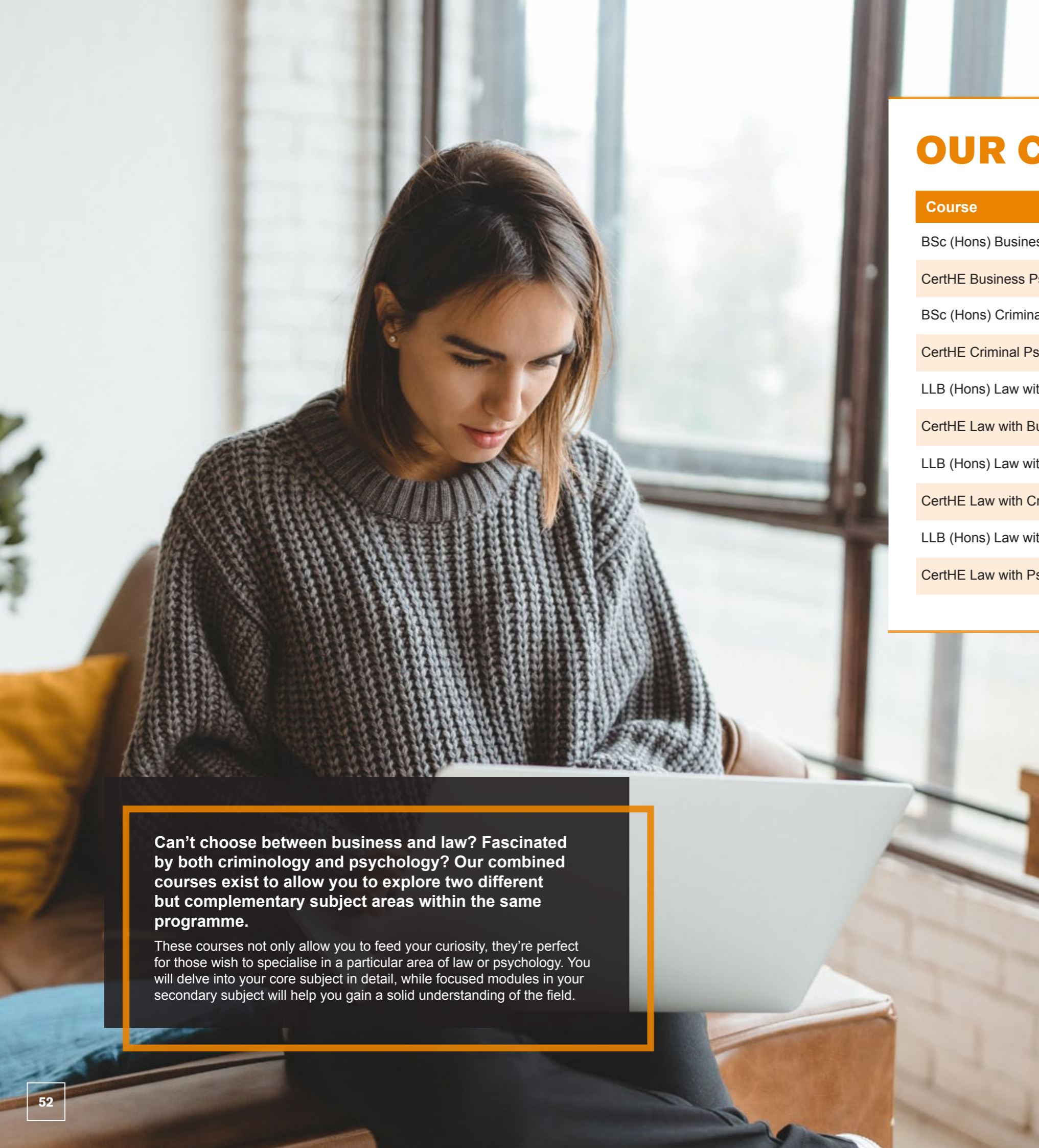
If English is not your first language, your English ability should be equivalent to an IELTS score of 6.0. If you do not hold an IELTS or equivalent qualification, we require students to pass a free online English test.

You will need to pass your first assignment set within the first three weeks of the course in order to continue with your studies.

READY TO APPLY?

Complete the online application form and an Admissions Adviser will be in touch to assist you in the enrolment process.

APPLY NOW



OUR COMBINED COURSES

Course	Indicative duration
BSc (Hons) Business Psychology	4 years
CertHE Business Psychology	16 months
BSc (Hons) Criminal Psychology	4 years
CertHE Criminal Psychology	16 months
LLB (Hons) Law with Business	4 years
CertHE Law with Business	16 months
LLB (Hons) Law with Criminology	4 years
CertHE Law with Criminology	16 months
LLB (Hons) Law with Psychology	4 years
CertHE Law with Psychology	16 months

Why we're great

- Many of our combined courses have a range of optional modules, allowing you to tailor your studies precisely to your interests.
- Our dedicated, motivated and passionate tutors are all specialists in their fields and will be on-hand to offer personal support and guidance.
- Designed with employability in mind, each combined course is beneficial in a wide range of career paths.

Can't choose between business and law? Fascinated by both criminology and psychology? Our combined courses exist to allow you to explore two different but complementary subject areas within the same programme.

These courses not only allow you to feed your curiosity, they're perfect for those who wish to specialise in a particular area of law or psychology. You will delve into your core subject in detail, while focused modules in your secondary subject will help you gain a solid understanding of the field.

"Our Combined courses offer the freedom to explore two subjects in detail rather than one. Importantly, Graduates from Combined courses have a wider set of skills valued by employers."

- Professor Janey Henderson, Deputy Academic Director
University of Essex Online

BSc (Hons) BUSINESS PSYCHOLOGY

Through this degree* you will gain an understanding of the psychological behaviours of individuals within a business context. The skills and knowledge gained through this course can be applied immediately to the real world, making you an asset to any team or employer.

Start dates: September and November 2020, February, April and July 2021

Tuition fee 2020-21: £18,500 ([learn more](#))

Mode of study: Online and part-time

Qualification: BSc (Hons)

Funding options: [See here](#) for more information

Indicative duration: 4 years

University of Essex Online programmes are delivered by Kaplan Open Learning, an experienced online learning provider.

Syllabus

The BSc (Hons) in Business Psychology is made up of the following modules and, upon completion, is equal to a total of 360 credits.

Level 4 modules

- Fundamentals of Effective Learning in Psychology (15 credits)*
- Introduction to Social Psychology (15 credits)*
- Human Resources Management (15 credits)*
- Introduction to Cognitive Psychology (15 credits)*
- Fundamentals of Marketing (15 credits)*
- One optional module**:
 - Personality and Intelligence (15 credits)
 - Business and Management Skills (15 credits)
- Introduction to Research Methods (30 credits)*

* These modules are core and must be passed in order to achieve the award.

** Optional modules become core once taken.

Level 5 modules

- Biological Psychology (15 credits)*
- Advanced Cognitive Psychology (15 credits)*
- Leadership and Managing Teams (15 credits)*
- Individual Differences, Emotions and Behaviours (15 credits)*
- Organisational Development and Change (15 credits)*
- Quantitative Psychology (15 credits)*
- Psychological Development through the Lifespan (15 credits)*
- Consumer Behaviour (15 credits)*

Level 6 modules

- Critical Social Psychology (15 credits)
- Developmental Science (15 credits)
- Occupational Psychology (15 credits)
- Business Strategy (15 credits)
- International Marketing Strategy (15 credits)
- Reasoning and Decision-Making in a Business Context (15 credits)
- Final Psychology Project (30 credits)*

Entry requirements

In order to satisfy the academic entry route requirements for our BSc (Hons) Business Psychology, you must have the following qualifications as a minimum:

- three A-levels or equivalent

In order to satisfy the work experience entry route requirements for our BSc (Hons) Business Psychology, you must meet the following criteria:

- GCSE Maths and English at grade C or above, or equivalent
- three years' relevant work experience

If English is not your first language, your English ability should be equivalent to an IELTS score of 6.0. If you do not hold an IELTS or equivalent qualification, we require students to pass a free online English test.

*Please note: This course is not accredited with the British Psychological Society (BPS).

READY TO APPLY?

Complete the online application form and an Admissions Adviser will be in touch to assist you in the enrolment process.

APPLY NOW

CerTHE BUSINESS PSYCHOLOGY

Through this short course you will be introduced to the exciting fields of business and psychology. You will develop an awareness of psychological theory and how this applies to a business context. This course can be used as a stepping stone towards studying a full Bachelors degree.

Start dates: September and November 2020, February, April and July 2021

Tuition fee 2020-21: £6,167 ([learn more](#))

Mode of study: Online and part-time

Funding options: [See here](#) for more information

Qualification: CertHE

Indicative duration: 16 months

University of Essex Online programmes are delivered by Kaplan Open Learning, an experienced online learning provider.

Syllabus

The CertHE Business Psychology is made up of the following modules and, upon completion, is equal to a total of 120 credits.

Level 4 modules

- Fundamentals of Effective Learning in Psychology (15 credits)*
- Introduction to Social Psychology (15 credits)*
- Introduction to Cognitive Psychology (15 credits)*
- Introduction to Research Methods (30 credits)*
- Human Resource Management (15 credits)*
- Fundamentals of Marketing (15 credits)*
- One optional module from the list below**:
 - Personality and Intelligence (15 credits)*
 - Business and Management Skills (15 credits)*

* These modules are core and must be passed in order to achieve the award.

** Optional modules become core once taken.

Upon completion of your CertHE Business Psychology, we offer the opportunity for you to progress on to study for a full Bachelors degree (360 credits).

Entry requirements

We believe that education should be accessible for everyone. That's why we offer an open entry route – meaning you don't need any prior academic or work experience in order to start studying with us.

If English is not your first language, your English ability should be equivalent to an IELTS score of 6.0. If you do not hold an IELTS or equivalent qualification, we require students to pass a free online English test.

You will need to pass your first assignment set within the first three weeks of the course in order to continue with your studies.

READY TO APPLY?

Complete the online application form and an Admissions Adviser will be in touch to assist you in the enrolment process.

APPLY NOW

BSc (Hons) CRIMINAL PSYCHOLOGY

Does the field of criminal psychology pique your interest? This degree* enables you to learn more about the criminal mind and the critical issues in the criminal justice system. You will cover thought-provoking topics such as offender profiling, risk management and offender rehabilitation, in addition to the core areas of cognitive, social and developmental psychology.

Start dates: September and November 2020, February, April and July 2021

Tuition fee 2020-21: £18,500 ([learn more](#))

Mode of study: Online and part-time

Qualification: BSc (Hons)

Funding options: [See here](#) for more information

Indicative duration: 4 years

University of Essex Online programmes are delivered by Kaplan Open Learning, an experienced online learning provider.

Syllabus

The BSc (Hons) Criminal Psychology is made up of the following modules and is equal to a total of 360 credits.

Level 4 modules

- Fundamentals of Effective Learning in Psychology (15 credits)*
- Introduction to Social Psychology (15 credits)*
- Introduction to Cognitive Psychology (15 credits)*
- Introduction to Research Methods (30 credits)*
- Crime and Society (15 credits)*
- Introduction to Offender Profiling (15 credits)*
- One optional module from the list below**:
 - Dealing with Offending Behaviour (15 credits)
 - Personality and Intelligence (15 credits)

* These modules are core and must be passed in order to achieve the award.

** Optional modules become core once taken.

Level 5 modules

- Biological Psychology (15 credits)*
- Advanced Cognitive Psychology (15 credits)*
- Psychological Development through the Lifespan (15 credits)*
- Quantitative Psychology (15 credits)*
- Individual Differences, Emotions and Behaviours (15 credits)*
- Forensic Psychology (15 credits)*
- Two optional modules from the list below**:
 - Criminology (15 credits)
 - Risk Assessment and Management (15 credits)
 - Criminal Investigation (15 credits)
 - Youth Crime and Justice (15 credits)
 - Prisons and Penology (15 credits)
 - Substance Misuse and Crime (15 credits)
 - Probation and Community Justice (15 credits)

Level 6 modules

- Critical Social Psychology (15 credits)
- Developmental Science (15 credits)
- Investigative Psychology (15 credits)
- Final Criminal Psychology Project (30 credits)*
- Criminal Behaviour and Deviance (15 credits)
- Victimology and Criminal Victimization (15 credits)
- One optional module from the list below**:
 - Policing (15 credits)
 - Economics of Crime (15 credits)
 - Criminal Justice in the Information Age (15 credits)

Entry requirements

In order to satisfy the academic entry route requirements for our BSc (Hons) Criminal Psychology, you must have the following qualifications as a minimum:

- three A-levels or equivalent

In order to satisfy the work experience entry route requirements for our BSc (Hons) Criminal Psychology, you must meet the following criteria:

- GCSE Maths and English at grade C or above, or equivalent
- three years' relevant work experience

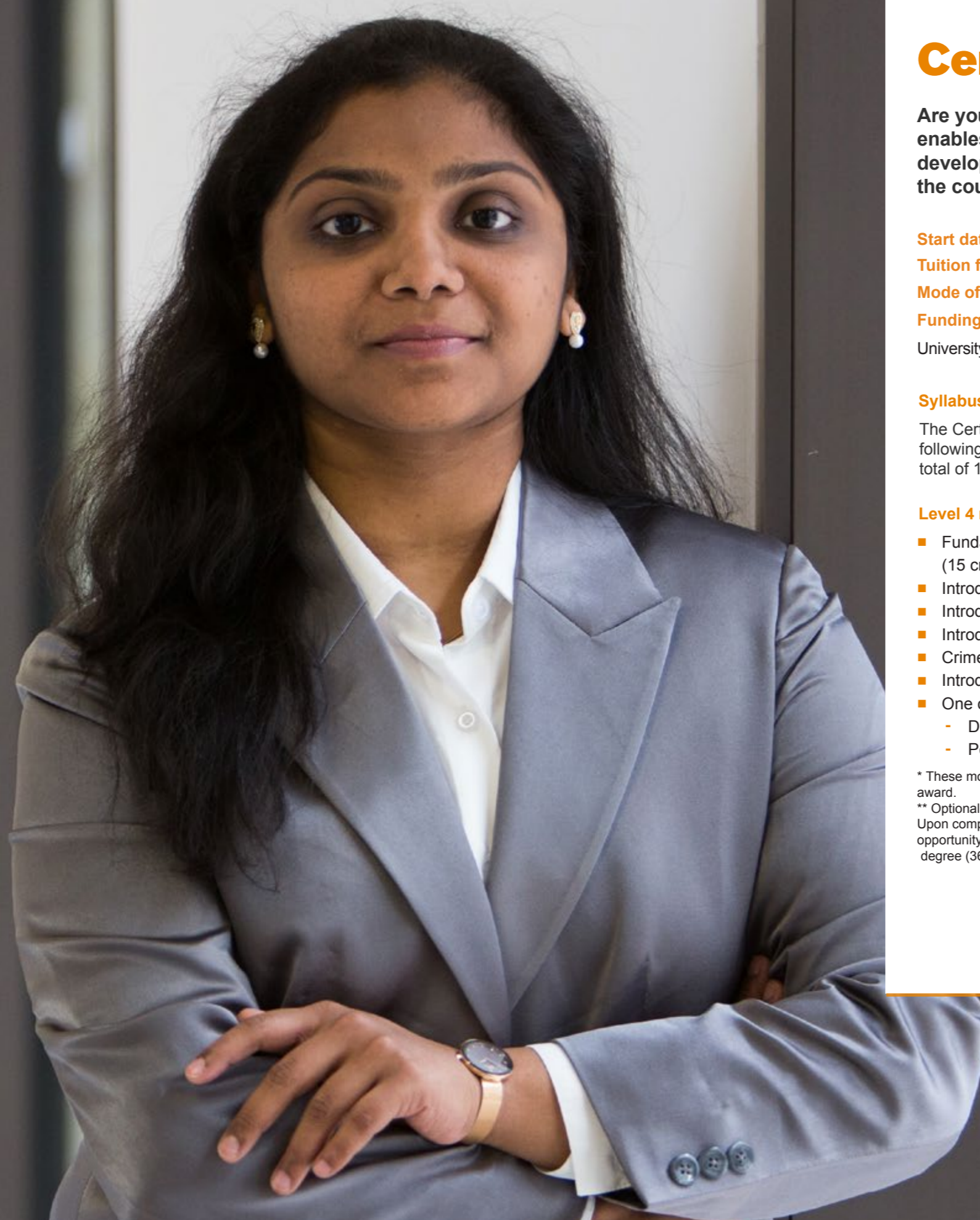
If English is not your first language, your English ability should be equivalent to an IELTS score of 6.0. If you do not hold an IELTS or equivalent qualification, we require students to pass a free online English test.

*Please note: This course is not accredited with the British Psychological Society (BPS).

READY TO APPLY?

Complete the online application form and an Admissions Adviser will be in touch to assist you in the enrolment process.

APPLY NOW



CerTHE CRIMINAL PSYCHOLOGY

Are you fascinated with the fields of criminology and psychology? This short course* enables you to delve into the scientific and theoretical underpinnings of psychology and develop knowledge in specialist areas such as the criminal justice system. Upon completing the course, you will have the chance to progress onto studying a Bachelors degree.

Start dates: September and November 2020, February, April and July 2021

Tuition fee 2020-21: £6,167 ([learn more](#))

Mode of study: Online and part-time

Funding options: [See here](#) for more information

Qualification: CertHE

Indicative duration: 16 months

University of Essex Online programmes are delivered by Kaplan Open Learning, an experienced online learning provider.

Syllabus

The CertHE Criminal Psychology is made up of the following modules and, upon completion, is equal to a total of 120 credits.

Level 4 modules

- Fundamentals of Effective Learning in Psychology (15 credits)*
- Introduction to Social Psychology (15 credits)*
- Introduction to Cognitive Psychology (15 credits)*
- Introduction to Research Methods (30 credits)*
- Crime and Society (15 credits)*
- Introduction to Offender Profiling (15 credits)*
- One optional module from the list below**
 - Dealing with Offending Behaviour (15 credits)
 - Personality and Intelligence (15 credits)

* These modules are core and must be passed in order to achieve the award.

** Optional modules become core once taken.

Upon completion of your CertHE Criminal Psychology, we offer the opportunity for you to progress on to study for a full Bachelors degree (360 credits).

Entry requirements

We believe that education should be accessible for everyone. That's why we offer an open entry route – meaning you don't need any prior academic or work experience in order to start studying with us.

If English is not your first language, your English ability should be equivalent to an IELTS score of 6.0. If you do not hold an IELTS or equivalent qualification, we require students to pass a free online English test.

You will need to pass your first assignment set within the first three weeks of the course in order to continue with your studies.

READY TO APPLY?

Complete the online application form and an Admissions Adviser will be in touch to assist you in the enrolment process.

APPLY NOW

LLB (Hons) LAW WITH BUSINESS

Are you interested in the fields of law and business? This degree[◊] is for you if you're considering a commercial law career or want to enhance your business acumen by gaining knowledge of important legal and regulatory principles. Your specialism in the fields of law and business will make you an asset to any corporation.

Start dates: August, September, October and November 2020, January, February, March, April, June and July 2021

Tuition fee 2020-21: £18,500 ([learn more](#))

Mode of study: Online and part-time

Qualification: BSc (Hons)

Funding options: [See here](#) for more information

Indicative duration: 4 years

University of Essex Online programmes are delivered by Kaplan Open Learning, an experienced online learning provider.

Syllabus

The LLB (Hons) Law with Business is made up of the following modules and, upon completion, is equal to 360 credits.

Level 4 modules

- Legal Skills and Context (30 credits)*
- Criminal Law (30 credits)†
- Public Law (30 credits)†
- Business Environment (15 credits)*
- One optional module:
 - Business and Management Skills (15 credits)
 - Fundamentals of Marketing (15 credits)
 - Human Resource Management (15 credits)
 - Introduction to Finance (15 credits)

* These modules are core and must be passed in order to achieve the award.

** Optional modules become core once taken.

† These modules are compulsory and must be passed in order to achieve a Qualifying Law Degree.

Level 5 modules

- Contract Law (30 credits)†
- Law of Tort (30 credits)†
- Land Law (30 credits)†
- Operations Management (15 credits)*
- One optional module:
 - Leadership and Managing Teams (15 credits)
 - Marketing and Sales Management (15 credits)
 - Financial Decision Making (15 credits)
 - Business Planning (15 credits)
 - Project Management (15 credits)
 - Marketing Communications (15 credits)
 - Consumer Behaviour (15 credits)

Level 6 modules

- European Union Law (15 credits)†
- Equity and Trusts (15 credits)†
- Wills and the Administration of Estates (15 credits)†
- Business Strategy (15 credits)*
- Optional modules equal to 60 credits:
 - Final Year Research Project (30 credits)
 - Strategic Human Resource Management (15 credits)
 - International Marketing Strategy (15 credits)
 - Business Finance (15 credits)
 - e-Business and Marketing (15 credits)
 - Marketing Research (15 credits)
 - Services Marketing (15 credits)

Entry requirements

In order to satisfy the academic entry route requirements for our LLB (Hons) Law with Business, you must have the following qualifications as a minimum:

- three A-levels or equivalent

In order to satisfy the work experience entry route requirements for our LLB (Hons) Law with Business, you must meet the following criteria:

- GCSE Maths and English at grade C or above, or equivalent
- three years' relevant work experience

If English is not your first language, your English ability should be equivalent to an IELTS score of 6.0. If you do not hold an IELTS or equivalent qualification, we require students to pass a free online English test.

[◊] If you enrol onto this programme by September 2021, you can choose the Legal Practice Course (LPC) route rather than the SQE route to qualify as a solicitor. This programme also meets Bar Standards Board's (BSB) academic component of training to become a barrister.

READY TO APPLY?

Complete the online application form and an Admissions Adviser will be in touch to assist you in the enrolment process.

APPLY NOW



CertHE LAW WITH BUSINESS

This course introduces you to two career-applicable disciplines: law and business. You will gain knowledge of legal and business concepts, while also developing transferable workplace skills. You can immediately apply this knowledge to your current role.

Start dates: August, September, October and November 2020, January, February, March, April, June and July 2021

Tuition fee 2020-21: £6,167 ([learn more](#))

Mode of study: Online and part-time

Qualification: CertHE

Funding options: [See here](#) for more information

Indicative duration: 16 months

University of Essex Online programmes are delivered by Kaplan Open Learning, an experienced online learning provider.

Syllabus

This CertHE Law with Business is made up of the following modules and, upon completion, is equal to 120 credits.

Level 4 modules

- Legal Skills and Context (30 credits)*
- Criminal Law (30 credits)
- Public Law (30 credits)
- Business Environment (15 credits)*
- One optional module:
 - Business and Management Skills (15 credits)
 - Fundamentals of Marketing (15 credits)
 - Human Resource Management (15 credits)
 - Introduction to Finance (15 credits)

* These modules are core and must be passed in order to achieve the award.

** Optional modules become core once taken.

Upon completion of your CertHE Law with Business, we offer the opportunity for you to progress on to study for a full Bachelors degree (360 credits).

Entry requirements

We believe that education should be accessible for everyone. That's why we offer an open entry route – meaning you don't need any prior academic or work experience in order to start studying with us.

If English is not your first language, your English ability should be equivalent to an IELTS score of 6.0. If you do not hold an IELTS or equivalent qualification, we require students to pass a free online English test.

You will need to pass your first assignment set within the first three weeks of the course in order to continue with your studies.

READY TO APPLY?

Complete the online application form and an Admissions Adviser will be in touch to assist you in the enrolment process.

APPLY NOW

LLB (Hons) LAW WITH CRIMINOLOGY

Want to explore the complementary and fascinating fields of law and criminology? Through this degree^o, you will gain a firm understanding of the English legal system as well as specialist knowledge of criminology and criminal behaviour. You will also develop key critical thinking skills that will prepare you for a broad range of disciplines, from law and criminology to related sectors.

Start dates: September and November 2020, February, April and July 2021

Tuition fee 2020-21: £18,500 ([learn more](#))

Mode of study: Online and part-time

Qualification: BSc (Hons)

Funding options: [See here](#) for more information

Indicative duration: 4 years

University of Essex Online programmes are delivered by Kaplan Open Learning, an experienced online learning provider.

Syllabus

The LLB (Hons) Law with Criminology degree is made up of the following modules and, upon completion, is equal to 360 credits.

Level 4 modules

- Legal Skills and Context (30 credits)*
- Criminal Law (30 credits)†
- Public Law (30 credits)†
- Introduction to Criminology (15 credits)*
- One optional module:
 - Crime and Society (15 credits)
 - Dealing with Offending Behaviour (15 credits)
 - Justice and Punishment (15 credits)

* These modules are core and must be passed in order to achieve the award.

** Optional modules become core once taken.

† These modules are compulsory and must be passed in order to achieve a Qualifying Law Degree.

Level 5 modules

- Contract Law (30 credits)†
- Law of Tort (30 credits)†
- Land Law (30 credits)†
- Criminology (15 credits)*
- One optional module:
 - Forensic and Criminal Psychology (15 credits)
 - Criminal Investigation (15 credits)
 - Youth Crime and Justice (15 credits)
 - Prisons and Penology (15 credits)
 - Probation and Community Justice (15 credits)

Level 6 modules

- European Union Law (15 credits)†
- Equity and Trusts (15 credits)†
- Wills and the Administration of Estates (15 credits)†
- Criminal Behaviour and Deviance (15 credits)*
- Optional modules worth 60 credits:
 - Final Year Research Project (30 credits)
 - Victimology and Criminal Victimization (15 credits)
 - Criminal Justice in the Information Age: Cyber Crime and Security (15 credits)
 - The Economics of Crime (15 credits)
 - Policing (15 credits)

Entry requirements

In order to satisfy the academic entry route requirements for our LLB (Hons) Law with Criminology, you must have the following qualifications as a minimum:

- three A-levels or equivalent

In order to satisfy the work experience entry route requirements for our LLB (Hons) Law with Criminology, you must meet the following criteria:

- GCSE Maths and English at grade C or above, or equivalent
- three years' relevant work experience

If English is not your first language, your English ability should be equivalent to an IELTS score of 6.0. If you do not hold an IELTS or equivalent qualification, we require students to pass a free online English test.

^o If you enrol onto this programme by September 2021, you can choose the Legal Practice Course (LPC) route rather than the SQE route to qualify as a solicitor. This programme also meets Bar Standards Board's (BSB) academic component of training to become a barrister.

READY TO APPLY?

Complete the online application form and an Admissions Adviser will be in touch to assist you in the enrolment process.

APPLY NOW



CerTHE LAW WITH CRIMINOLOGY

On this course, you will focus on the complementary subjects of law and criminology. You will gain a solid grounding in the fundamentals of the English legal system, in addition to a broad theoretical understanding of criminological, psychological, biological and sociological explanations of crime.

Start dates: September and November 2020, February, April and July 2021

Tuition fee 2020-21: £6,167 ([learn more](#))

Mode of study: Online and part-time

Funding options: [See here](#) for more information

Qualification: CertHE

Indicative duration: 16 months

University of Essex Online programmes are delivered by Kaplan Open Learning, an experienced online learning provider.

Syllabus

The CertHE Law with Criminology degree is made up of the following modules and, upon completion, is equal to 120 credits.

Level 4 modules

- Legal Skills and Context (30 credits)*
- Criminal Law (30 credits)
- Public Law (30 credits)
- Introduction to Criminology (15 credits)
- One optional module:
 - Crime and Society (15 credits)
 - Dealing with Offending Behaviour (15 credits)
 - Justice and Punishment (15 credits)

* These modules are core and must be passed in order to achieve the award.

** Optional modules become core once taken.

Upon completion of your CertHE Law with Criminology, we offer the opportunity for you to progress on to study for a full Bachelors degree (360 credits).

Entry requirements

We believe that education should be accessible for everyone. That's why we offer an open entry route – meaning you don't need any prior academic or work experience in order to start studying with us.

If English is not your first language, your English ability should be equivalent to an IELTS score of 6.0. If you do not hold an IELTS or equivalent qualification, we require students to pass a free online English test.

You will need to pass your first assignment set within the first three weeks of the course in order to continue with your studies.

READY TO APPLY?

Complete the online application form and an Admissions Adviser will be in touch to assist you in the enrolment process.

APPLY NOW

LLB (Hons) LAW WITH PSYCHOLOGY

Do legal issues and the way people think and behave interest you? This comprehensive degree[◊] allows you to explore the exciting fields of law and psychology. Whatever your career aspirations, the specialist knowledge and skills you gain through this degree will prepare you well for careers in law and psychology, as well as related sectors.

Start dates: September and November 2020, February, April and July 2021

Tuition fee 2020-21: £18,500 ([learn more](#))

Mode of study: Online and part-time

Qualification: BSc (Hons)

Funding options: [See here](#) for more information

Indicative duration: 4 years

University of Essex Online programmes are delivered by Kaplan Open Learning, an experienced online learning provider.

Syllabus

The LLB (Hons) Law with Psychology is made up of the following modules and, upon completion, is equal to 360 credits.

Level 4 modules

- Legal Skills and Context (30 credits)*
- Criminal Law (30 credits)†
- Public Law (30 credits)†
- Introduction to Social Psychology (15 credits)*
- One optional module:
 - Introduction to Cognitive Psychology (15 credits)
 - Personality and Intelligence (15 credits)

* These modules are core and must be passed in order to achieve the award.

** Optional modules become core once taken.

† These modules are compulsory and must be passed in order to achieve a Qualifying Law Degree.

Level 5 modules

- Contract Law (30 credits)†
- Law of Tort (30 credits)†
- Land Law (30 credits)†
- Psychological Development through the Lifespan (15 credits)*
- One optional module:
 - Biological Psychology (15 credits)
 - Reasoning and Decision-Making (15 credits)
 - Forensic Psychology (15 credits)

Level 6 modules

- European Union Law (15 credits)†
- Equity and Trusts (15 credits)†
- Wills and the Administration of Estates (15 credits)†
- Critical Social Psychology (15 credits)*
- Optional modules worth 60 credits:
 - Final Year Research Project (30 credits)
 - Developmental Science (15 credits)
 - Occupational Psychology (15 credits)
 - Investigative Psychology (15 credits)
 - Clinical and Counselling Psychology (15 credits)

Entry requirements

In order to satisfy the academic entry route requirements for our LLB (Hons) Law with Psychology, you must have the following qualifications as a minimum:

- three A-levels or equivalent

In order to satisfy the work experience entry route requirements for our LLB (Hons) Law with Psychology, you must meet the following criteria:

- GCSE Maths and English at grade C or above, or equivalent
- three years' relevant work experience

If English is not your first language, your English ability should be equivalent to an IELTS score of 6.0. If you do not hold an IELTS or equivalent qualification, we require students to pass a free online English test.

[◊] If you enrol onto this programme by September 2021, you can choose the Legal Practice Course (LPC) route rather than the SQE route to qualify as a solicitor. This programme also meets Bar Standards Board's (BSB) academic component of training to become a barrister.

READY TO APPLY?

Complete the online application form and an Admissions Adviser will be in touch to assist you in the enrolment process.

APPLY NOW

CertHE LAW WITH PSYCHOLOGY

Through this course, you will acquire knowledge of how the English legal system operates and also learn about the science behind the mind, brain and behaviour. Additionally, you can choose to study optional modules that fit with your interests and career aspirations.

Start dates: September and November 2020, February, April and July 2021

Tuition fee 2020-21: £6,167 ([learn more](#))

Mode of study: Online and part-time

Qualification: CertHE

Funding options: [See here](#) for more information

Indicative duration: 16 months

University of Essex Online programmes are delivered by Kaplan Open Learning, an experienced online learning provider.

Syllabus

The CertHE Law with Psychology is made up of the following modules and, upon completion, is equal to 120 credits.

Level 4 modules

- Legal Skills and Context (30 credits)*
- Criminal Law (30 credits)
- Public Law (30 credits)
- Introduction to Social Psychology (15 credits)
- One optional module:
 - Introduction to Cognitive Psychology (15 credits)
 - Personality and Intelligence (15 credits)

* These modules are core and must be passed in order to achieve the award.

** Optional modules become core once taken.

Upon completion of your CertHE Law with Psychology, we offer the opportunity for you to progress on to study for a full Bachelors degree (360 credits).

Entry requirements

We believe that education should be accessible for everyone. That's why we offer an open entry route – meaning you don't need any prior academic or work experience in order to start studying with us.

If English is not your first language, your English ability should be equivalent to an IELTS score of 6.0. If you do not hold an IELTS or equivalent qualification, we require students to pass a free online English test.

You will need to pass your first assignment set within the first three weeks of the course in order to continue with your studies.

READY TO APPLY?

Complete the online application form and an Admissions Adviser will be in touch to assist you in the enrolment process.

APPLY NOW



STUDYING WITH US

TUITION FEES AND FUNDING

We know that cost is a major factor affecting your decision to pursue studying. That's why we have a range of funding options to choose from and a knowledgeable team on hand to help you make the right decisions about financing your studies.

Programme	2020-21 Full course fee*	Indicative study duration**	Credits
CertHE	£6,167	16 months	120
BA (Hons)	£18,500	4 years	360
BSc (Hons)	£18,500	4 years	360
LLB (Hons)	£18,500	4 years	360
BA (Hons) Top-up	£6,167	16 months	120

*Prices are reviewed annually. We reserve the right to increase tuition fees in line with the RPI-X index. If you pay your tuition fees annually in advance the tuition fees will not be increased before your next annual payment. Please read our terms and conditions for more details.

**The indicative study duration is a guide to how long your course will take to complete. The actual duration may vary depending on study options chosen and module availability.

All tuition fees shown are net of any applicable sales tax payable by you in your country of residence. Where we are required to add sales tax at the local statutory rate, this will be added to the tuition fees shown and confirmed during the payment process.

Payment options

Most UK or EU nationals living in England are eligible for a government backed student loan. [See next page for more details](#). If you are not eligible for a tuition fee loan, we offer a simple monthly payment plan to spread the cost of your tuition fee. Alternatively, if you pay your full tuition fee up front, we offer a 10% [discount](#).

Money Back Guarantee

Our 21 day money back guarantee means that it is possible for you to try out the online learning experience and confirm that it is right for you. If after three weeks you are not satisfied with the course you can receive a full refund. [Terms and conditions apply](#).





STUDENT LOANS

Most UK or EU nationals living in England are eligible for a government backed student loan.

Undergraduate student loans are paid directly to us, and the amount you are eligible to borrow is set each year by the Student Loans Company.

Eligibility

Eligibility is determined by the Student Loans Company. For students living in England, requirements include:

- be a UK national or have 'settled status' (i.e. you have indefinite leave to remain and therefore there are no restrictions on how long you can stay in the UK)
- normally live in England
- have been living in the UK for 3 years before starting your course

Are you eligible for a student loan?

[Click here to find out.](#)

If you are not eligible for a student loan, you can take advantage of our flexible monthly payment plans and range of scholarships and discounts. [See more on the next page.](#)

Loan repayments

You'll only start making repayments if your income is more than £25,000 per year and any outstanding balance will be written off after 30 years. Your monthly repayments will be based on your income, not how much you borrowed. If your circumstances change and your annual income drops below £25,000 your repayments will stop.*

*Information correct as of 10 September 2020

SCHOLARSHIPS AND DISCOUNTS

As part of our mission to make education more accessible, we have a range of options available to reduce the cost of your learning.

Full payment discount

If you choose to pay your full course fee upfront, we'll apply a 10% discount.*

International scholarship

International students residing in specific regions outside of the UK may be eligible for a partial scholarship for our undergraduate online courses.

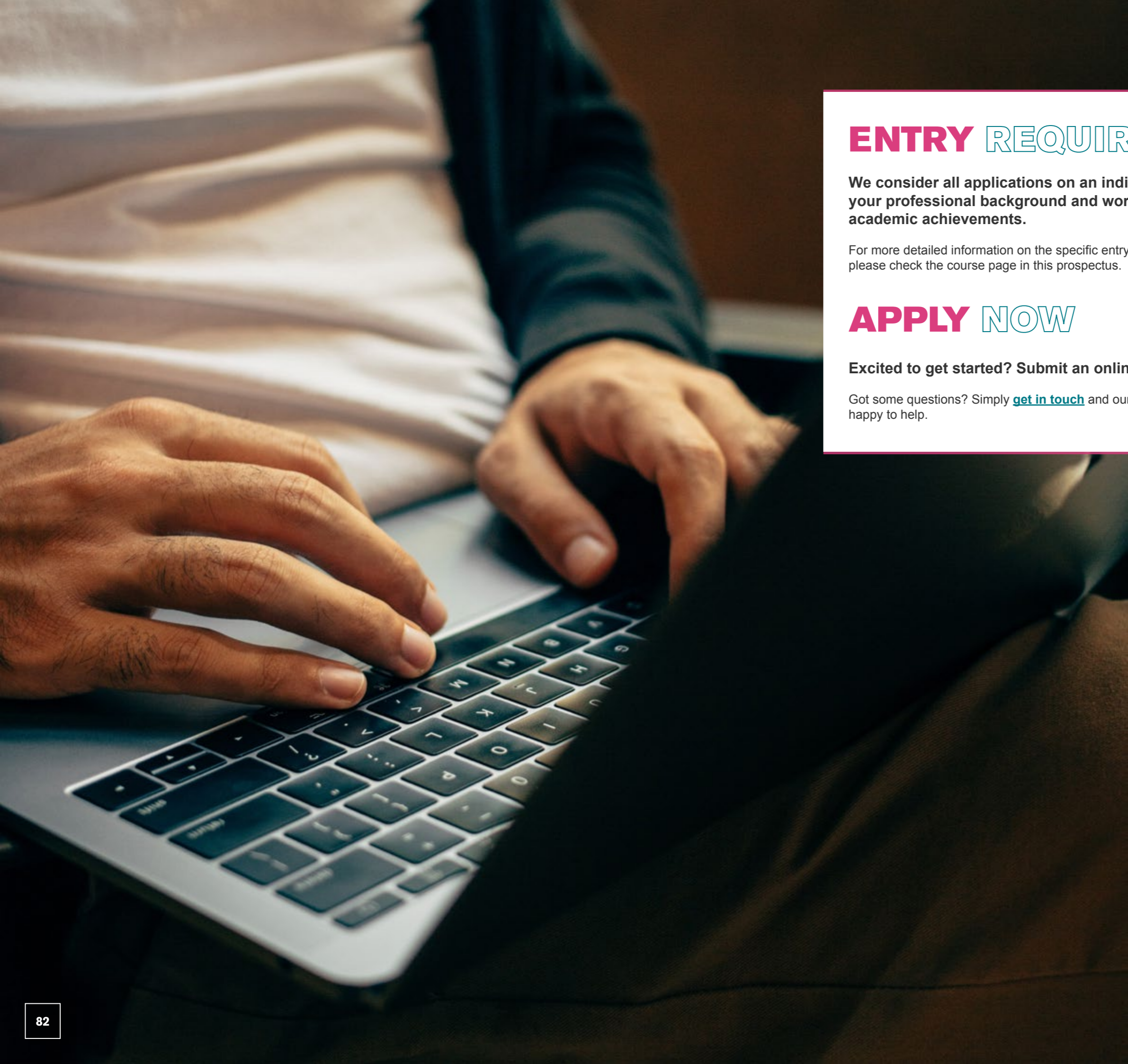
Talk to a member of the Admissions Team to find out more and if you are eligible.

*This is only applicable to students studying online and does not apply to students studying on campus.

ELCAS funding for members of the Armed Forces

For those in the Armed Forces in the UK who are considering their options for resettlement, you may be able to access funding from the Enhanced Learning Credits Administration Service (ELCAS). All of our courses are approved by the scheme – just mention it to our Admissions team when you apply.





ENTRY REQUIREMENTS

We consider all applications on an individual basis, taking into account your professional background and work experience as well as any previous academic achievements.

For more detailed information on the specific entry requirements for each undergraduate course please check the course page in this prospectus.

APPLY NOW

Excited to get started? Submit an online application [here](#).

Got some questions? Simply [get in touch](#) and our experienced Admissions Advisers would be happy to help.

QUALIFICATIONS JARGON BUSTER

Can you tell your LLB from your CertHE? Here's our guide to some of the confusing terms in Higher Education.

Bachelors degree

Also known as an undergraduate, first or honours degree. The most common form of Higher Education, traditionally taken immediately after secondary education. Bachelors degrees are available in almost any subject and study duration is normally three years full-time or four years part-time. They are a level 6 qualification and consist of 180 credits.

There are a number of different types of Bachelors degrees, including Bachelor of Arts (BA), Bachelor of Science (BSc), Bachelor of Laws (LLB) and more.

If an undergraduate degree title is followed by (Hons), e.g. BA (Hons) Business and Management, it means it is an honours degree. This means the degree is at a higher level of study than an ordinary Bachelors degree. All University of Essex Online undergraduate degrees are honours degrees.

Certificate of Higher Education

Usually shortened to CertHE, this is a short undergraduate qualification consisting of 120 credits at level 4. It's equivalent to the first level of a Bachelors degree.

There are benefits to studying a CertHE as a standalone qualification, as they are proportionally cheaper and shorter than a full Bachelors. It also allows students to gain insight to a subject without committing to four years of study.

Masters degree

Also known as a postgraduate degree. Usually studied after completing an undergraduate degree, however this is not necessarily a requirement. Masters degrees are split into either 'taught' or 'research' degrees, depending on what the majority of study time is devoted to.

There are a number of different types of Masters degrees, including Master of Science (MSc), Master of Laws (LLM), Master of Business Administration (MBA), Master of Business Management (MBM), Master of Public Health (MPH), Master of Education (M.Ed.) and more.

IELTS

The International English Language Testing System is the world's most popular English language test for Higher Education. Please note: we don't require our students to have an IELTS qualification – we provide a free online English test to demonstrate your English language skills if you don't.

TEF

Short for Teaching Excellence and Student Outcomes Framework. This a UK government assessment of the excellence of teaching at universities colleges. It assesses how well higher education providers ensure excellent outcomes for their students in terms of graduate-level employment and further study. The highest possible rating is gold – which is the rating Essex Online was awarded!



JOIN THE CONVERSATION

f UniEssexOnline

UniEssexOnline

UniEssexOnline

UniEssexOnline

in University of Essex Online

#essexonline

WE'RE ABOUT THE
LIFELONG LEARNERS
– THOSE WHO LOVE
TO LEARN HOW, BUT
WANT TO CHALLENGE
WHY. TO US IT DOESN'T
MATTER WHERE YOU'VE
COME FROM. WE'RE
INTERESTED IN HOW
YOU WANT TO GROW
AND WHAT YOU WANT TO
CHANGE.

**WE ARE ESSEX ONLINE.
ARE YOU?**

online.essex.ac.uk

+44 (0) 1206 489 358 | enquiries@online.essex.ac.uk